



Barrow Lane, Hesse, HU13 0PE  
Offers Over £110,000

  
**Philip  
Bannister**  
Estate & Letting Agents



# Barrow Lane, Hessle, HU13 0PE

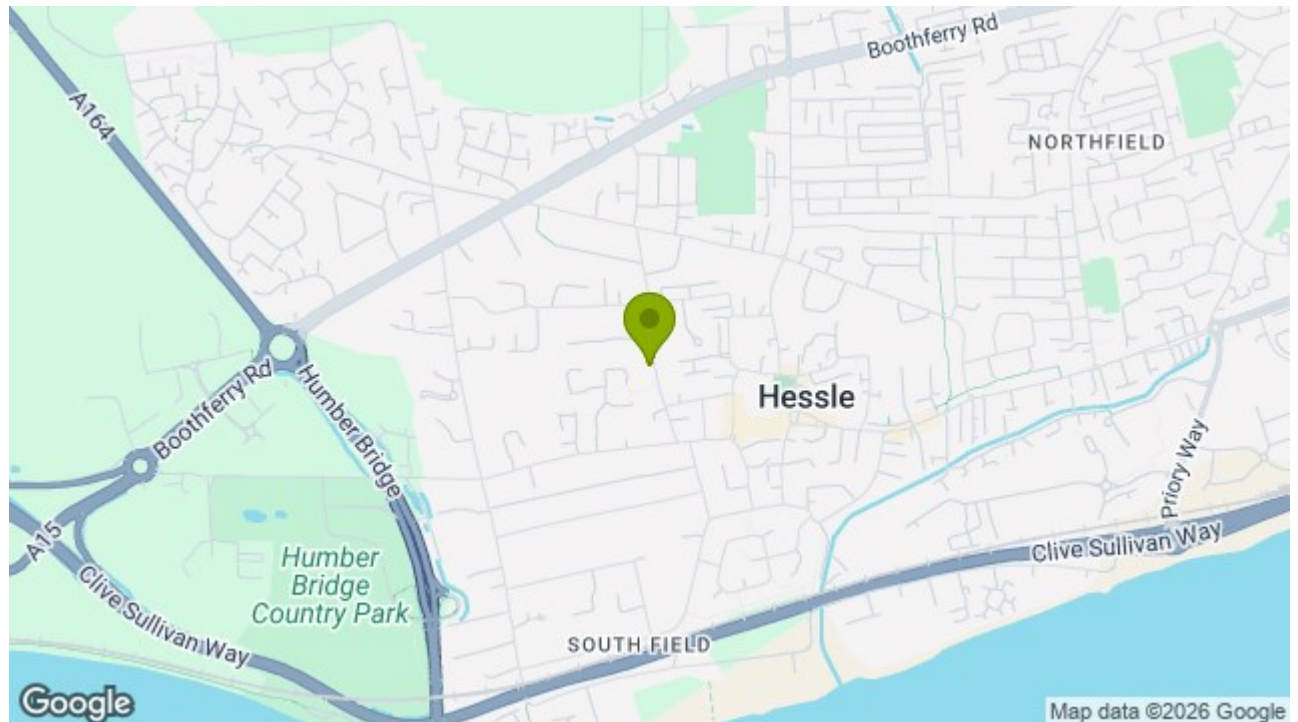
## Key Features

- Over 60's Development
- Superb Second Floor Apartment
- Communal and private Entrance Hall
- Lounge/Dining Area with Juliette balcony, Kitchen
- Two Bedrooms, Shower Room, Communal Areas
- Communal Gardens, Early Viewing Is A Must
- No Chain Involved
- EPC - D

This fantastic two bedroom second floor apartment forms part of an over 60's independent living complex. Built originally by Messrs McCarthy & Stone who specialise in providing safe and secure communities, the complex combines independence with peace of mind providing a house manager during daytime hours and a 24 hour careline. The development also features a residents lounge, communal laundry, lifts to all floors, emergency care line system, security/video door entrance system, guest suite and well tended communal gardens.

This individual apartment comprises of a private entrance hall with security intercom system, lounge, kitchen, 2 bedrooms and shower room. Outside are communal gardens and parking. Early viewing is a must and is offered with no chain involved,

Energy Efficiency Rating		
	Current	Potential
Very energy efficient - lower running costs		
(92 plus) <b>A</b>		<b>87</b>
(81-91) <b>B</b>		
(69-80) <b>C</b>		
(55-68) <b>D</b>	<b>66</b>	
(39-54) <b>E</b>		
(21-38) <b>F</b>		
(1-20) <b>G</b>		
Not energy efficient - higher running costs		
England & Wales		
EU Directive 2002/91/EC		







## HESSLE

The Town of Hessle is well served for local amenities with first class shopping facilities available within the Town Centre, public transportation & local primary and secondary schools. Good road and rail connections are available with a local train station off Southfield, and the A63 dual carriageway running nearby to the South of the town, allowing convenient access to Hull City Centre and the national motorway network.

## GROUND FLOOR

### COMMUNAL AREAS

To the ground floor is a communal entrance hall with intercom security system, communal recreational areas and stairs and lifts to all floors.

## SECOND FLOOR

### PRIVATE ENTRANCE HALL

with entrance door and storage cupboard.

### LOUNGE

17'3 x 11' (5.26m x 3.35m)  
with double glazed french style doors with a Juliette balcony, feature fireplace and electric fire.

### KITCHEN

8'9 x 5'8 (2.67m x 1.73m)  
Fitted kitchen with base and wall units, laminate work surfaces, drawers, sink unit, hob and oven, extractor hood, double glazed window.

### BEDROOM 1

15'3 x 9' (4.65m x 2.74m)  
with double glazed window and built in wardrobes.

## BEDROOM 2

10'3 x 8'8 (3.12m x 2.64m)  
with double glazed window and a range of built in wardrobes.

## SHOWER ROOM

with a three piece suite

## OUTSIDE

Communal gardens and grounds

## GENERAL INFORMATION

SERVICES - Mains water, electricity, and drainage are connected to the property.

CENTRAL HEATING - The property has the benefit of a electric heating

DOUBLE GLAZING - The property has the benefit of replacement PVC double glazed frames OR The property has the benefit of sealed unit double glazing.

SECURITY - The property has the benefit of an intercom security system.

COUNCIL TAX - From a verbal enquiry/online check we are led to believe that the Council Tax band for this property is Band D. (East Riding Of Yorkshire Council). We would recommend a purchaser make their own enquiries to verify this.

VIEWING - Strictly by appointment with the sole agents.

FIXTURES & FITTINGS - Carpets, curtains & light fittings are included within the price.

## THINKING OF SELLING?

We would be delighted to offer a FREE - NO OBLIGATION appraisal of your property and provide realistic advice in all aspects of the property market. Whether your property is not yet on the market or you are experiencing difficulty selling, all appraisals will be carried out with complete confidentiality.

## MORTGAGES

The mortgage market changes rapidly and it is vitally important you obtain the right advice regarding the best mortgage to suit your circumstances.

We are able to offer professional independent Mortgage Advice without any obligation. A few minutes of your valuable time could save a lot of money over the period of the Mortgage. Professional Advice will be given by Licensed Credit Brokers. Written quotations on request. Your home is at risk if you do not keep up repayments on a mortgage or other loan secured on it.

## AGENTS NOTES

Philip Bannister & Co.Ltd for themselves and for the vendors or lessors of this property whose agents they are give notice that (i) the particulars are set out as a general outline only for the guidance of intending purchasers or lessees, and do not constitute any part of an offer or contract (ii) all descriptions, dimensions, references to condition and necessary permissions for use and occupation, and other details are given in good faith and are believed to be correct and any intending purchaser or tenant should not rely on them as statements or representations of fact but must satisfy themselves by inspection or otherwise as to the correctness of each of them (iii) no person in the employment of Philip Bannister & Co.Ltd has any authority to make or give any representation or warranty whatever in relation to this property. If there is any point which is of particular importance to you, please contact the office and we will be pleased to check the information, particularly if you contemplate travelling some distance to view the property. Philip Bannister & Co.Ltd advise they do not test fitted appliances, electrical and plumbing installation







or central heating systems, nor have they undertaken any type of survey on this property. These particulars are issued on the strict understanding that all negotiations are conducted through Philip Bannister & Co.Ltd. And prospective purchasers should check on the availability of the property prior to viewing, Photograph Disclaimer - In order to capture the features of a particular room we will mostly use wide angle lens photography. This will sometimes distort the image slightly and also has the potential to make a room look larger. Please therefore refer also to the room measurements detailed within this brochure.

In compliance with NTSTEAT Guidance on Referral Fees, the agent confirms that vendors and prospective purchasers will be offered estate agency and other allied services for which certain referral fees/commissions may be made available to the agent. Services the agent and/or a connected person may earn referral fees/commissions from Financial Services, Conveyancing and Surveys. Typical Financial Services referral fee KC Mortgages £200, Typical Conveyancing Referral Fee: Graham & Rosen £150 (£125+VAT). Hamers £120 (£100+VAT), Lockings Solicitors £120 (£100+VAT), Eden & Co £180 (£150.00+VAT)

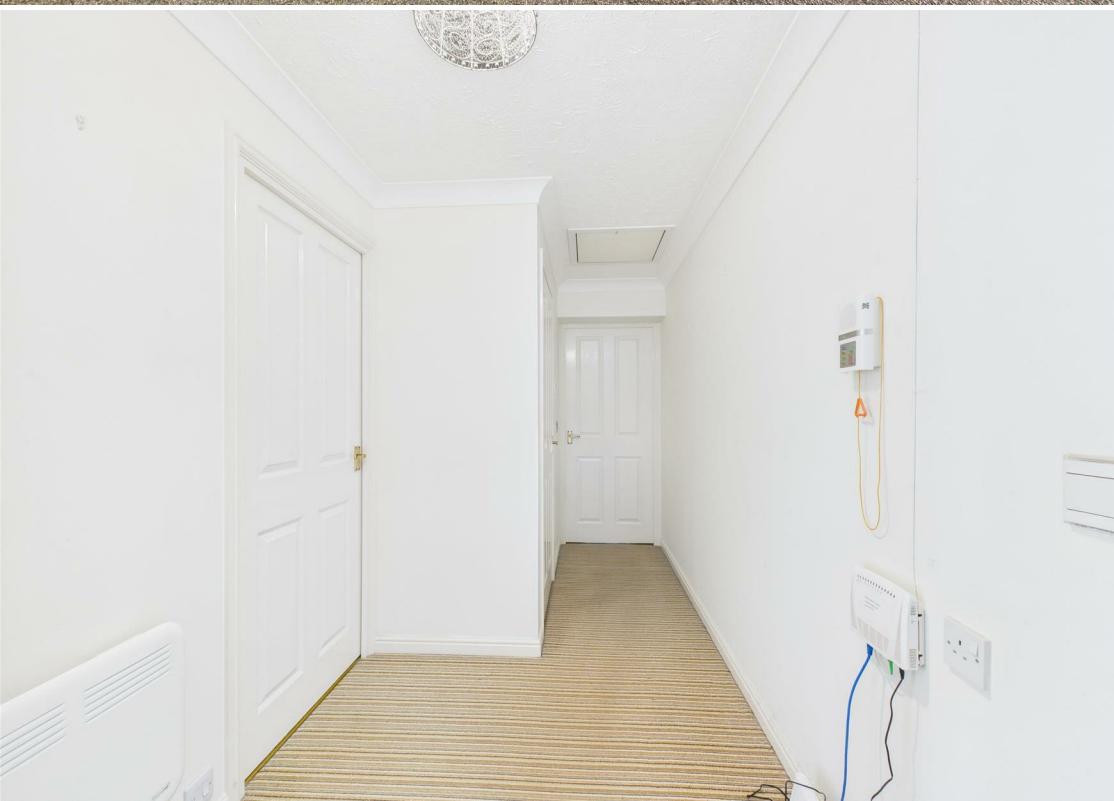
### AML.

Please be advised that when you agree to purchase a property, we are legally required under the Money Laundering, Terrorist Financing and Transfer of Funds (Information on the Payer) Regulations 2017 to obtain copies of your identification. Your ID and relevant personal data will be shared with our verification platform, Movebutler T/A IAMPROPERTY, to fulfil these legal obligations. If you do not wish for your data to be processed in this way, please inform the sales consultant handling your offer in writing as soon as possible.

### TENURE.

We understand that the property is Leasehold









Approximate total area<sup>(1)</sup>  
590 ft<sup>2</sup>

(1) Excluding balconies and terraces

Calculations reference the RICS IPMS 3C standard. Measurements are approximate and not to scale. This floor plan is intended for illustration only.

GIRAFFE360



58 Hull Road, Hessle, Hull, East Yorkshire, HU13 0AN  
Tel: 01482 649777 | Email: [info@philipbannister.co.uk](mailto:info@philipbannister.co.uk)  
[www.philipbannister.co.uk](http://www.philipbannister.co.uk)

  
**Philip Bannister**  
Estate & Letting Agents